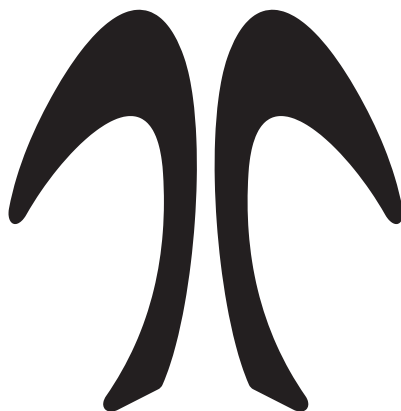


designLAB

SWIFT

BELT DRIVE PEDAL

USERS MANUAL



Thank you for choosing Swift. Please refer to this users manual to ensure safe and optimal use of the product.

Parts Introduction

Figure 1

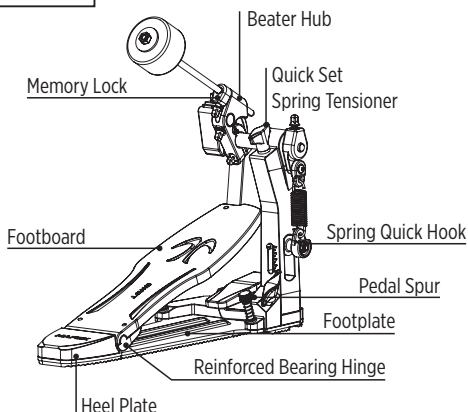


Figure 2

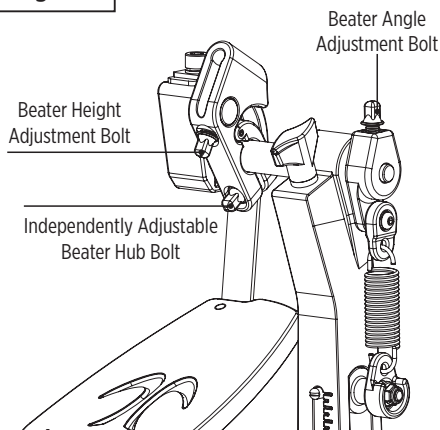
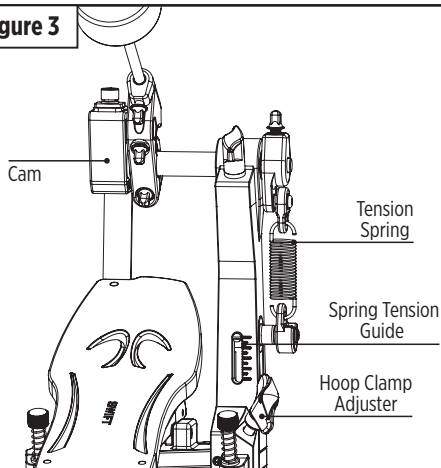


Figure 3



Icon Reference



Turn Clockwise



Turn Counter-Clockwise



Tighten



Loosen

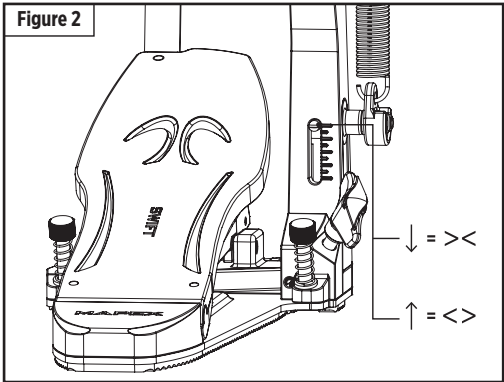
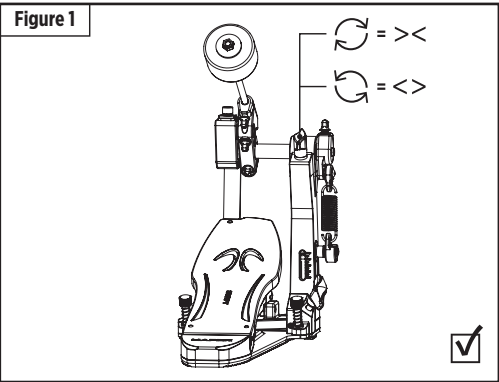


Parts Moving Direction

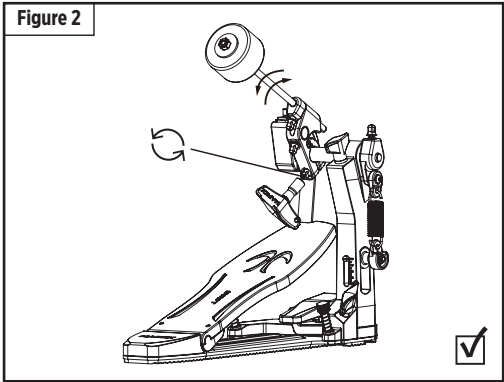
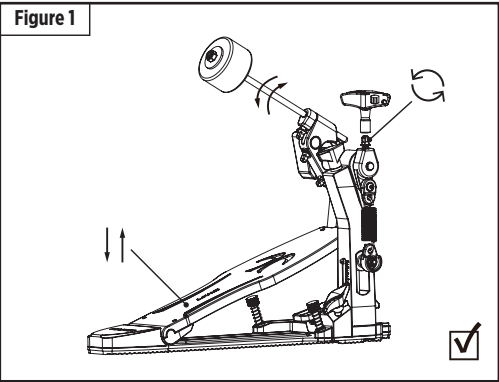


Step Completed

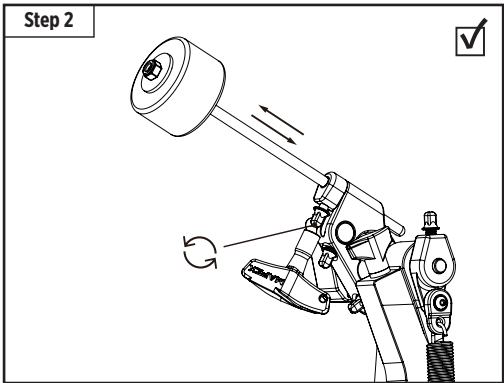
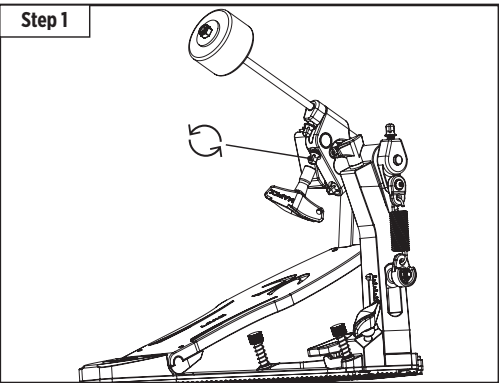
Spring Tension Adjustment



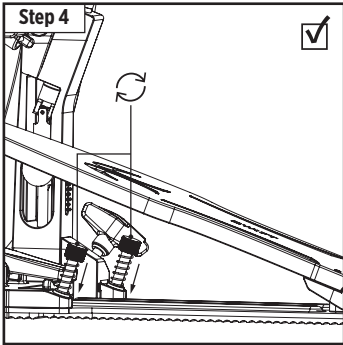
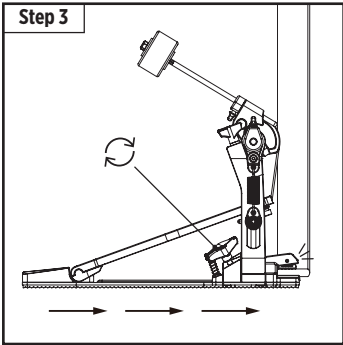
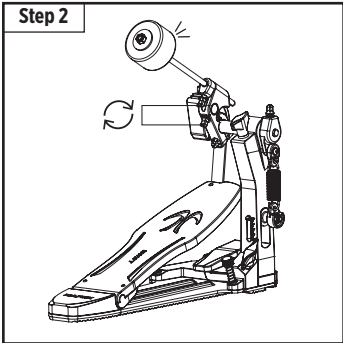
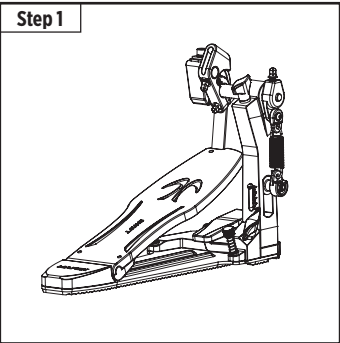
Beater Angle and Beater Hub Adjustment



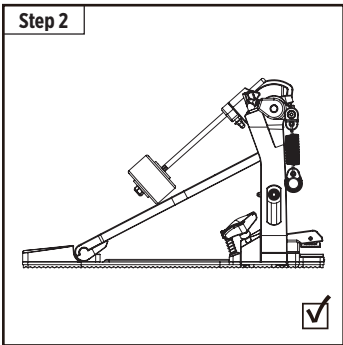
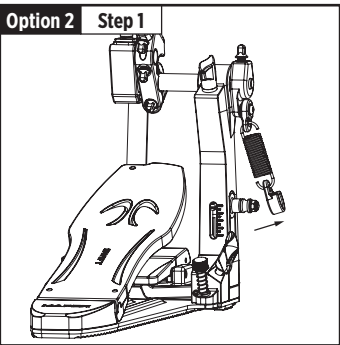
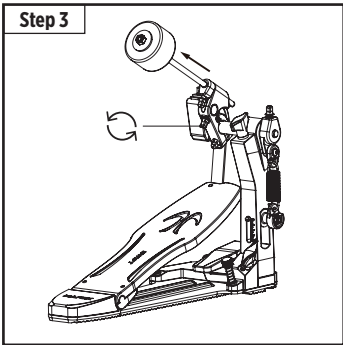
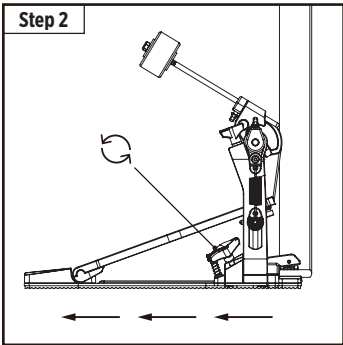
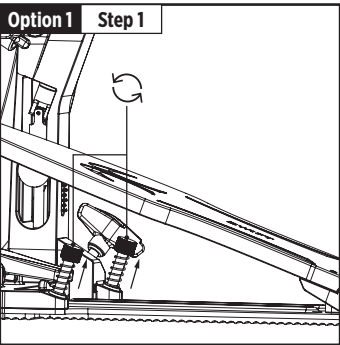
Beater Height Adjustment



Setup Guide



Disassembly Guide





MAPEXDRUMS.COM

Copyright © 2026 Mapex Drums

Any form of infringements are prohibited, without the permission of KHS
Specifications and designs are subject to change without prior notice