



S A T U R N



← SATURN →

SO YOU THINK YOU KNOW SATURN? THINK AGAIN.

Saturn never rests. The look, the tone, and the robust construction make it the only choice for a community of professional drummers around the globe. Now with new Design Lab features and SONIClear™ Attenuation System, Saturn tunes easily and quickly and delivers a full, round, tone with a deep dark punch.

FEATURES.....	4
CONFIGURATIONS.....	8
FINISHES.....	10
FALCON HARDWARE.....	22
ARTISTS.....	24



SAL Giancarelli
Staind

← FEATURES & CONFIGURATIONS →

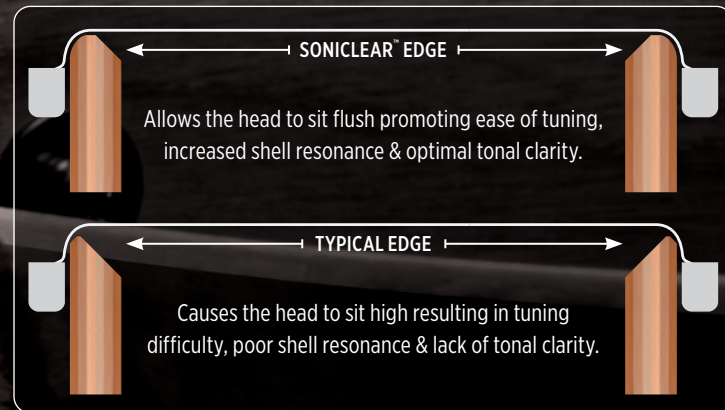
SATURN ARRIVES WITH NEW DESIGN LAB FEATURES ENHANCING AN ALREADY LEGENDARY SOUND. DO YOU LIKE CLEAR AND FOCUSED TOMS? HOW ABOUT FAT AND DENSE FLOOR TOMS? ANYONE FOR BASS DRUMS THAT KICK YOU IN THE CHEST?

SATURN DELIVERS.....



SONICLEAR BEARING EDGE

The **SONIClear™ Bearing Edge** is standard on Saturn shells and allows the drumhead to sit flatter and make better contact with the shell. The result is a stronger and deeper fundamental pitch, effortless and consistent tuning, and a significantly expanded tuning range. For the serious player, the increased head to edge contact increases shell vibration, allowing the sonic nuances of the Hybrid shell to stand out.

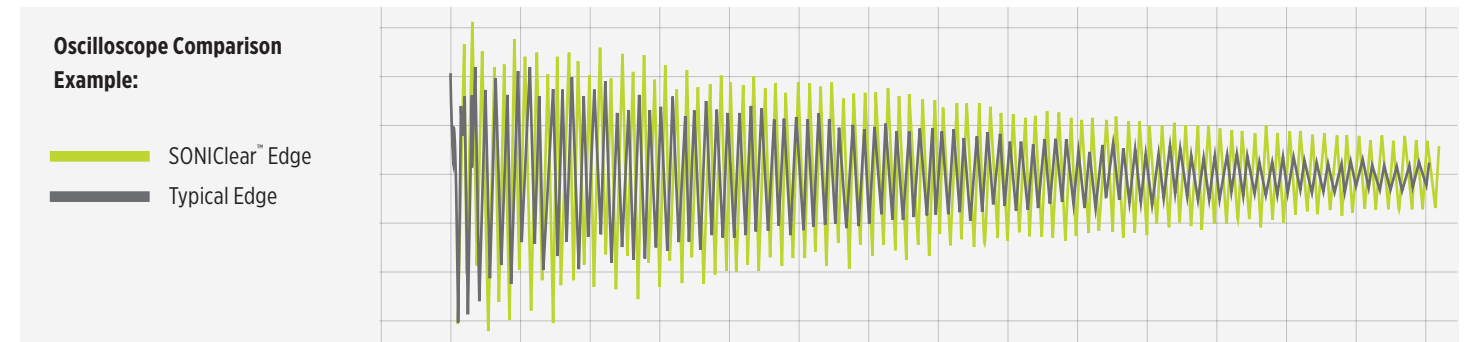


SONICLEAR™ EDGE AUDIO TEST SESSIONS

SOUND

The increased drumhead-to-shell contact achieved by the SONIClear™ Edge enhances shell vibration, resulting in the biggest sound possible from the drum.

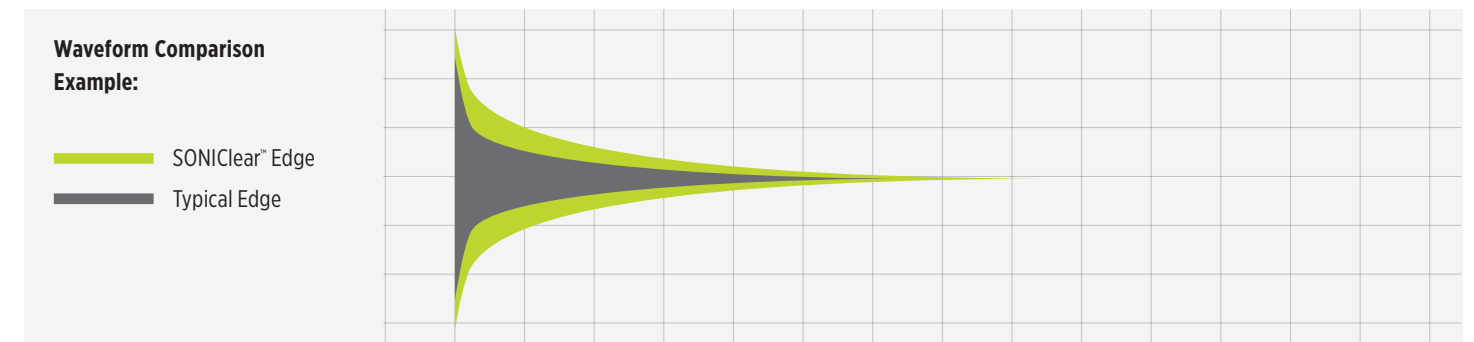
Oscilloscope Example: The Green Waveform is a recording of a drum with the SONIClear™ Edge. The dark grey waveform is a drum with a typical edge. Tuned to the same pitch and recorded identically, it's clear that the drum with the SONIClear™ Edge produces a much larger waveform from the initial strike through the full sustain of the note.



SUSTAIN

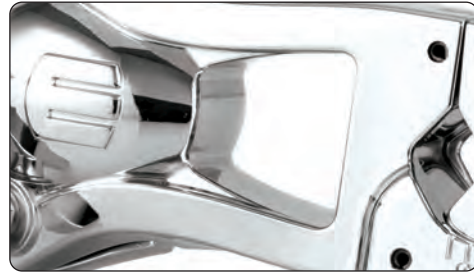
Because the drumhead sits flat on the SONIClear™ Edge, the tension applied during tuning is more balanced and stress-free. This allows the drumhead to vibrate freely and fully.

Waveform Comparison Example: The Green Waveform is a recording of a drum with the SONIClear™ Edge. The dark grey waveform is a drum with a typical edge. The size of the SONIClear™ waveform indicates a lower and stronger fundamental pitch while the length indicates a longer sustain compared to a typical edge.



SONICLEAR™ TOM HOLDER

The **SONIClear™ Tom Holder** is the standard attachment mechanism for all Saturn rack toms. The low-mass bridge preserves vibration in the head and shell, enhancing resonance and increasing tonal clarity.



The low-mass bridge preserves vibration in the head and shell, enhancing resonance and increasing tonal clarity.



An Omni-ball arm adjustment allows toms to be positioned at any angle and inverted for convenient bottom head tuning.



The spring-hinged adjustable clamp with position markings accommodates tube diameters from 5/8" to 1 1/4" and makes setup easy and consistent.



SONICLEAR™ TOM SUSPENSION

Hate it when you see more of the mount than you do of the shell? Us too.

Increases overall resonance by preserving vibration in the shell and heads.

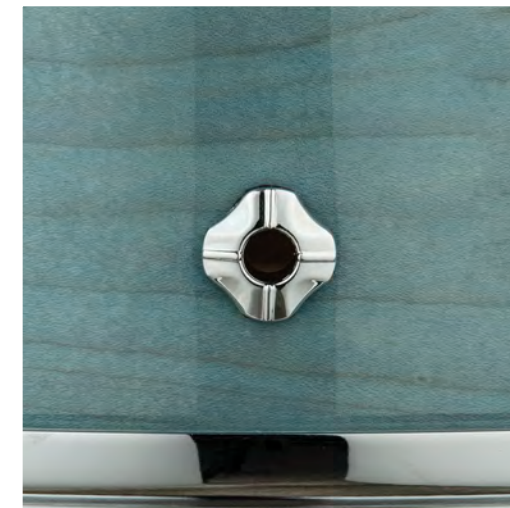
Doesn't touch the tension rods, helping heads stay in tune and making them easy to change.



AIR FLOW VENTING

Wanna feel "Out of Box" sound? Try these.

The venting is key to the feel and the overall resonance of the shells. Through painstaking testing, each Chamber Specific approach has led to a formula of multiple vent holes in Saturn series. Toms and bass drums have different combinations of vent holes. These air flow vents are placed at the *Nodal line with the lugs, so as to not affect the resonance of the shells.



SAS STATIC 90° FLOOR TOM LEGS

Tired of floor tom sound loss during playing? Then this is for you.

The straighter the path to the floor, the more sound loss: the static 90° Design Lab leg allowing the most possible resonance from the floor tom.



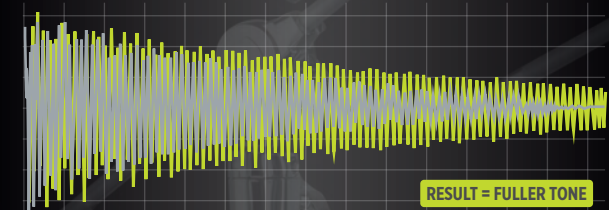
SONIC PEDESTAL FOOT

Want the perfect feeling final touch on the Floor Tom Leg? Feel this.

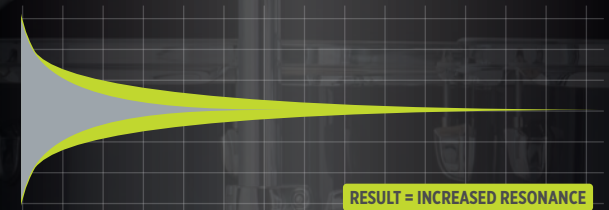
The steel leg is prevented from contacting the ground by an internal cotter pin, allowing the floor tom to "float" on the elevated "spring" of the rubber foot, eliminating vibration transfer and maximizing resonance.



Oscilloscope Comparison Example



Waveform Comparison Example



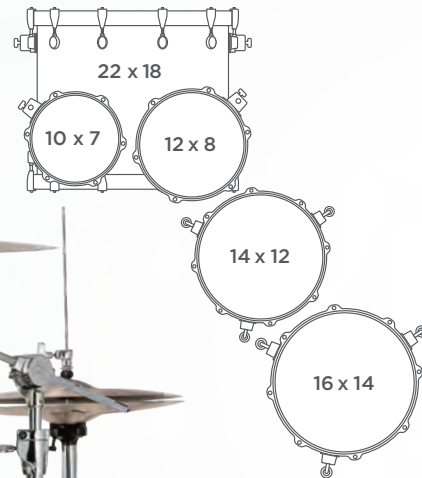
SONIClear™ Tom Clamp Typical Tom Clamp

CONFIGURATIONS

How many ↑ and how many ↓?

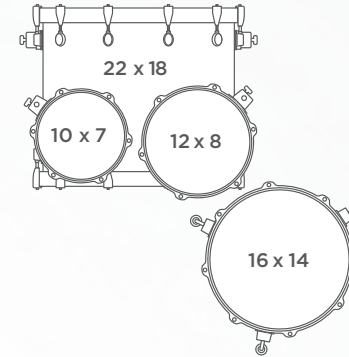
The Saturn offers a variety of configurations designed to fit diverse musical applications. Whether the preference is fast and focused or big and booming, every drummer can find a setup to suit their style.

SR628XU Studioease Shell Pack [2↑ - 2↓]



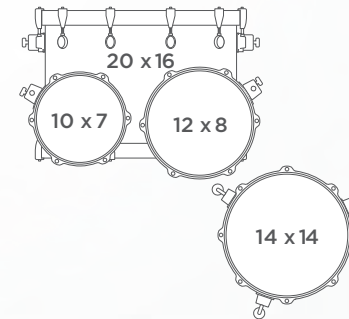
SR628XU

SR529XU Rock Shell Pack (Fast Sizes) [2↑ - 1↓]



SR529XU

SR504X Jazz Shell Pack [2↑ - 1↓]



SR504X

AQUA FADE



Featured Set-up: Studioease Shell Pack - [2↑ - 2↓]

SULPHUR FADE



Featured Set-up: Studioease Shell Pack - [2↑ - 2↓]



TEAL BLUE FADE



Featured Set-up: Rock Shell Pack - [2↑ - 1↓]

SCARLET FADE



Featured Set-up: Studioease Shell Pack - [2↑ - 2↓]



SATIN WHITE



Featured Set-up: Fusion Shell Pack - [2↑ - 1↓]

SATIN BLACK



Featured Set-up: Rock Shell Pack - [2↑ - 1↓]

FALCON

HARDWARE

In the studio. On tour. In the woodshed. Falcon's convenience and simplicity keep your mind where it needs to be... ON PLAYING!

DOUBLE BASS PEDAL

PF1000TW

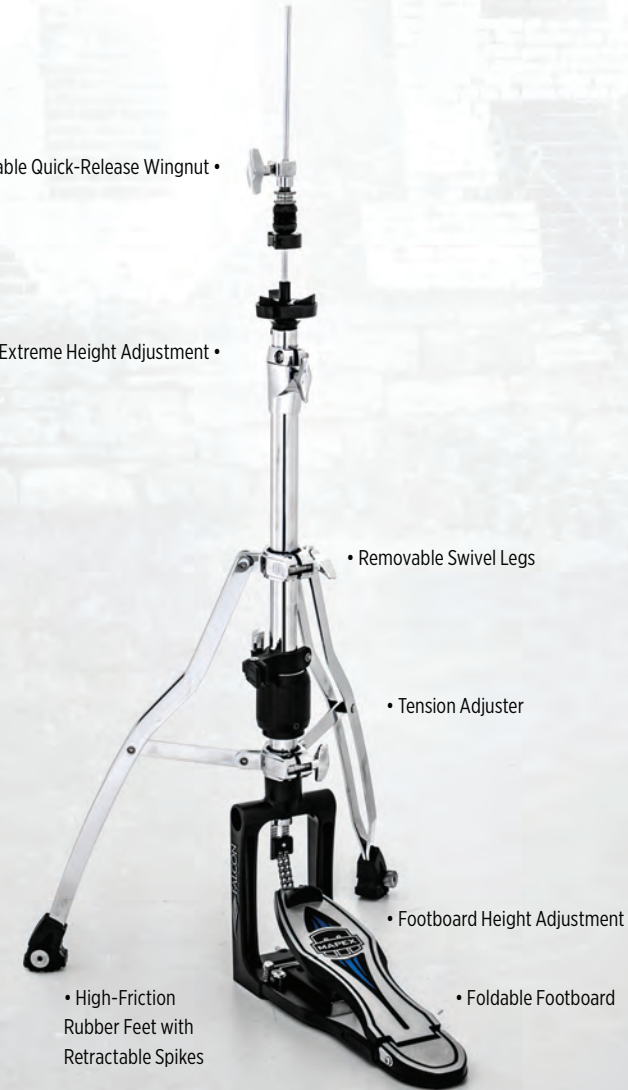


HI-HAT STAND

HF1000

Lockable Quick-Release Wingnut •

Extreme Height Adjustment •



• Removable Swivel Legs

• Tension Adjuster

• Footboard Height Adjustment

• High-Friction Rubber Feet with Retractable Spikes

• Foldable Footboard

BOOM STAND

BF1000

- Lockable Quick-Release Wingnut
- Super-Glide Stepless Tilter
- Single-Point Boom Arm Adjuster with Position Markers
- Hide-Away Boom Arm •



BASS PEDAL

PF1000

- Interchangeable Beater Weights
- Beater Angle Adjustment
- Interchangeable Drives
- Footboard Height Adjustment
- Reduced Base Plate Size
- Self-Adjusting Hoop Clamp



SNARE STAND

SF1000

- Centered Omni-Ball Snare Basket Adjustment
- Base Height Adjustment
- High-Friction Rubber Feet with Retractable Spikes





Alex Bailey
Marcus Miller



Fotis Benardo
*SepticFlesh, Chaostar,
SixForNine*



Richard Bravo
Juanez



Trevian Chandler
Pink Sweat\$, Jon B.



Richie Martinez
Arch Echo



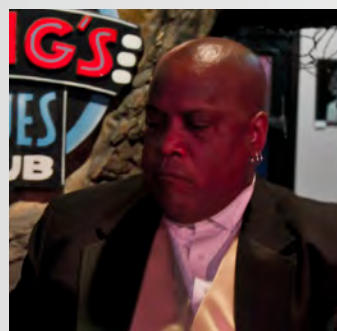
Ced Mitchell
*B2K Boys of the New
Milinnium*



Carlos Palmet
Pitbull



Steve Fidyk
*The Steve Fidyk Parlour
Project*



Tony Coleman
BB King



Dom Famularo
Educator



Vera Figueiredo
Independent



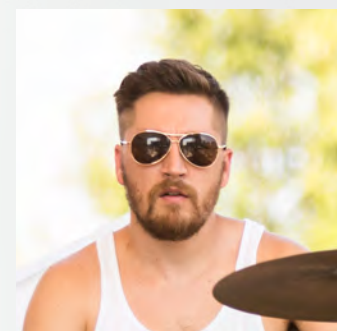
Sean Fuller
Florida Georgia Line



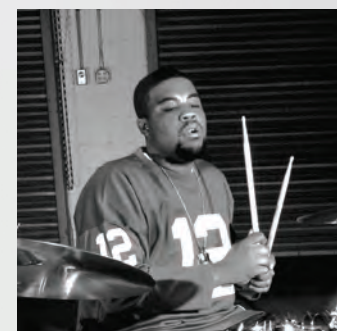
Aquiles Priester
WASP, Hangar, Edu Falaschi



Herlin Riley
Winton Marsalis



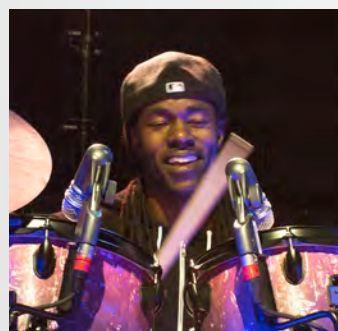
Tyler Ritter
Moon Taxi



Darrell Robinson
*NERD, Pharrell,
Snoop Dogg*



Sal Giancarelli
Staind, Saint Asonia



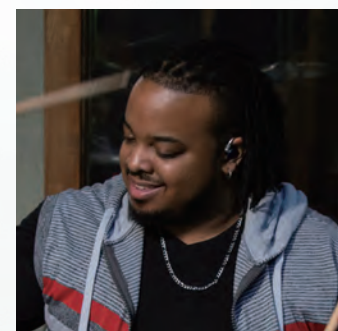
Eric 'Boots' Greene
Alicia Keys, Jay-Z



Claus Hessler
FLUX, Educator and Clinian



Ray Marshall Jr.
Charlie Puth, Jon Bellon



Steven J. Robinson
Selena Gomez



Damien Schmitt
*Jean Luc Ponty,
Electro-Schmitt*



Derico Waston
Victor Wooten

SATURN ARTISTS



W W W . M A P E X D R U M S . C O M

Copyright © 2022 Mapex Drums